

**Mission Statement:** The Lisbon Conservation Commission stewards and protects the town's natural resources through planning, promoting and educating to assist the town boards and the public in conservation matters. We encourage informed decision making to keep Lisbon a livable place today and for decades to come.

### Possible Projects:

Creating a trail for walking, hiking, and cycling from the Lisbon Rail Trail to existing Franconia trail system.

**Join** the Commission **OR** contact us to help with our upcoming projects. "This land is your land, this land is our land!"



### Who who who knew...

Ice out on Pearl Lake 4/21

Ice out on Perch Pond 4/22

### Nature Sightings:

Young moose running down the middle of Pearl Lake Rd. Morning of 4/15

Loons are back on Pearl Lake 4/22

Trillium leaves are up, daffodils are blooming

### Conservation Commission Members:

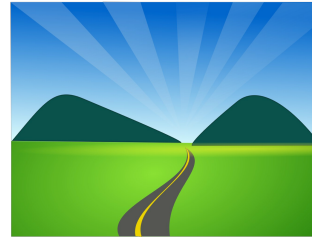
Robert Cook, Chairperson (June 2017)

Mark Roberts, Recording Secretary (Sept. 2018)

Betsy Stead (December 2018)

Rosalind Page (April 2019)

## Keep our town & roadsides beautiful!

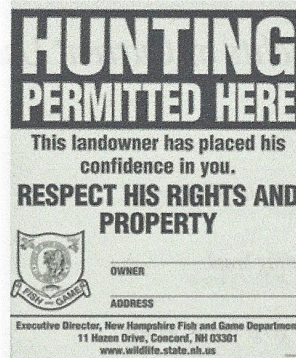


Lisbon Community  
Clean-Up Day

Saturday, May 18th

Get your blue bags beginning 5/10 and pick-up roadside trash in your neck of the woods. Bags available at the town hall. Bags can be dropped off for free at the Transfer Station.

### Things to consider before posting your land



Be aware of the message "NO TRESPASSING" signs send. Some signs can trigger unwanted reactions, such as destruction of signs and property, littering, and misunderstandings from neighbors.

**Inform your neighbors** of your decision to post. Neighbors can be a valuable resource, particularly in remote areas. They may observe people using your land, or have pertinent information about your property.

**Keep it positive** - such as "Welcome—Foot Traffic Only" or "Please, Carry Out Trash", "Land Use by Permission Only", or "Please Stay on Trail".

**Inform the public** of your intent. For example, if your land is open to snowmobiling but not to ATV's. Or if the land has a conservation easement, most organizations have cooperative signs informing the public of the landowner's management activities and intent of the land (see cover photo as an example), and such as "Wildlife Preserve".★



★Taken from SPACE Newsletter Summer 2006